

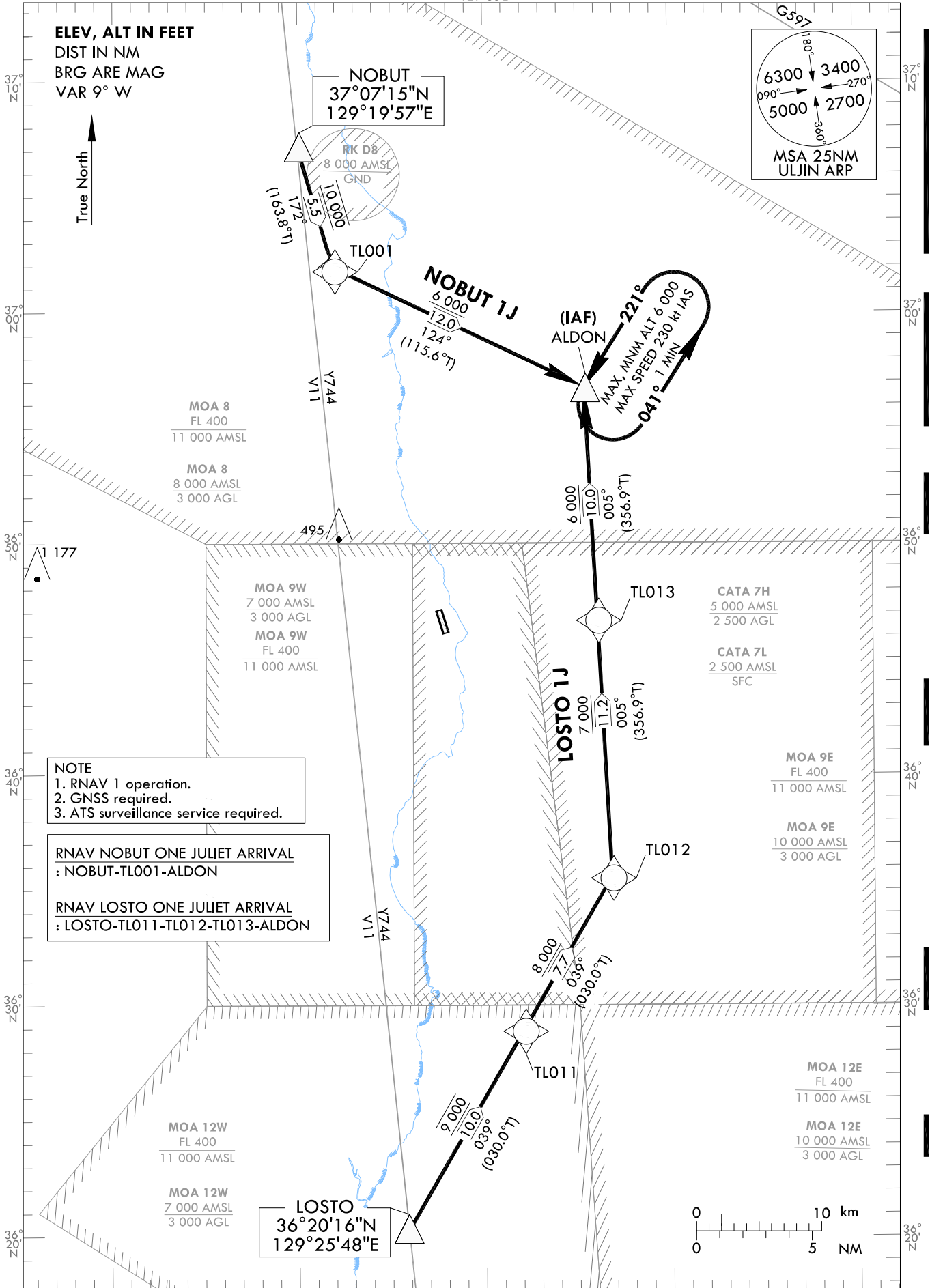
STANDARD ARRIVAL CHART
INSTRUMENT(STAR) - ICAO

TRANSITION ALT 14 000
TRANSITION LVL FL 140

ULJIN ARR 120.875
317.65
ULJIN TWR 118.55
317.45

ULJIN/ULjin(RKTL)
RWY 17
RNAV NOBUT 1J
RNAV LOSTO 1J

Note : Arrival under ICAO flight Procedures.



Change : Information of MAG VAR(8° W → 9° W), MSA and standard instrument arrival procedure for RWY 17.

AERONAUTICAL DATA TABULATION

Standard Instrument Arrival Procedure Coding Tables

RNAV NOBUT 1J												
Serial Number	Path Descriptor	Waypoint Identifier	Fly-over	Course/Track °M(°T)	Distance (NM)	Turn direction	Altitude (ft)	Speed (kt)	Coordinates	VPA/TCH	Navigation specification	Remarks
001	IF	NOBUT	-	-	-	-	-	-	37°07'15.1"N 129°19'56.6"E	-	RNAV 1	-
002	TF	TL001	-	172(163.8)	5.5	-	@10 000	-	37°01'57.9"N 129°21'52.1"E	-	RNAV 1	-
003	TF	ALDON	-	124(115.6)	12.0	-	+6 000	-	36°56'46.3"N 129°35'23.0"E	-	RNAV 1	IAF

RNAV LOSTO 1J												
Serial Number	Path Descriptor	Waypoint Identifier	Fly-over	Course/Track °M(°T)	Distance (NM)	Turn direction	Altitude (ft)	Speed (kt)	Coordinates	VPA/TCH	Navigation specification	Remarks
001	IF	LOSTO	-	-	-	-	-	-	36°20'15.8"N 129°25'48.3"E	-	RNAV 1	-
002	TF	TL011	-	039(030.0)	10.0	-	@9 000	-	36°28'56.0"N 129°32'00.2"E	-	RNAV 1	-
003	TF	TL012	-	039(030.0)	7.7	-	+8 000	-	36°35'34.5"N 129°36'46.2"E	-	RNAV 1	-
004	TF	TL013	-	005(356.9)	11.2	-	+7 000	-	36°46'46.3"N 129°36'02.3"E	-	RNAV 1	-
005	TF	ALDON	-	005(356.9)	10.0	-	+6 000	-	36°56'46.3"N 129°35'23.0"E	-	RNAV 1	IAF

HOLDING PROCEDURE

Holding Identification	Path Descriptor	Waypoint Identifier	Fly-over	Course/Track °M(°T)	Time (min)	Turn direction	Altitude (ft)	Speed (kt)	Coordinates	VPA/TCH	Navigation specification	Remarks
RNAV NOBUT 1J RNAV LOSTO 1J	HIM	ALDON	Y	041(032.0)	1.0	L	@6 000	-230	36°56'46.3"N 129°35'23.0"E	-	RNAV 1	-

Change : Information of standard instrument arrival procedure for RWY 17.

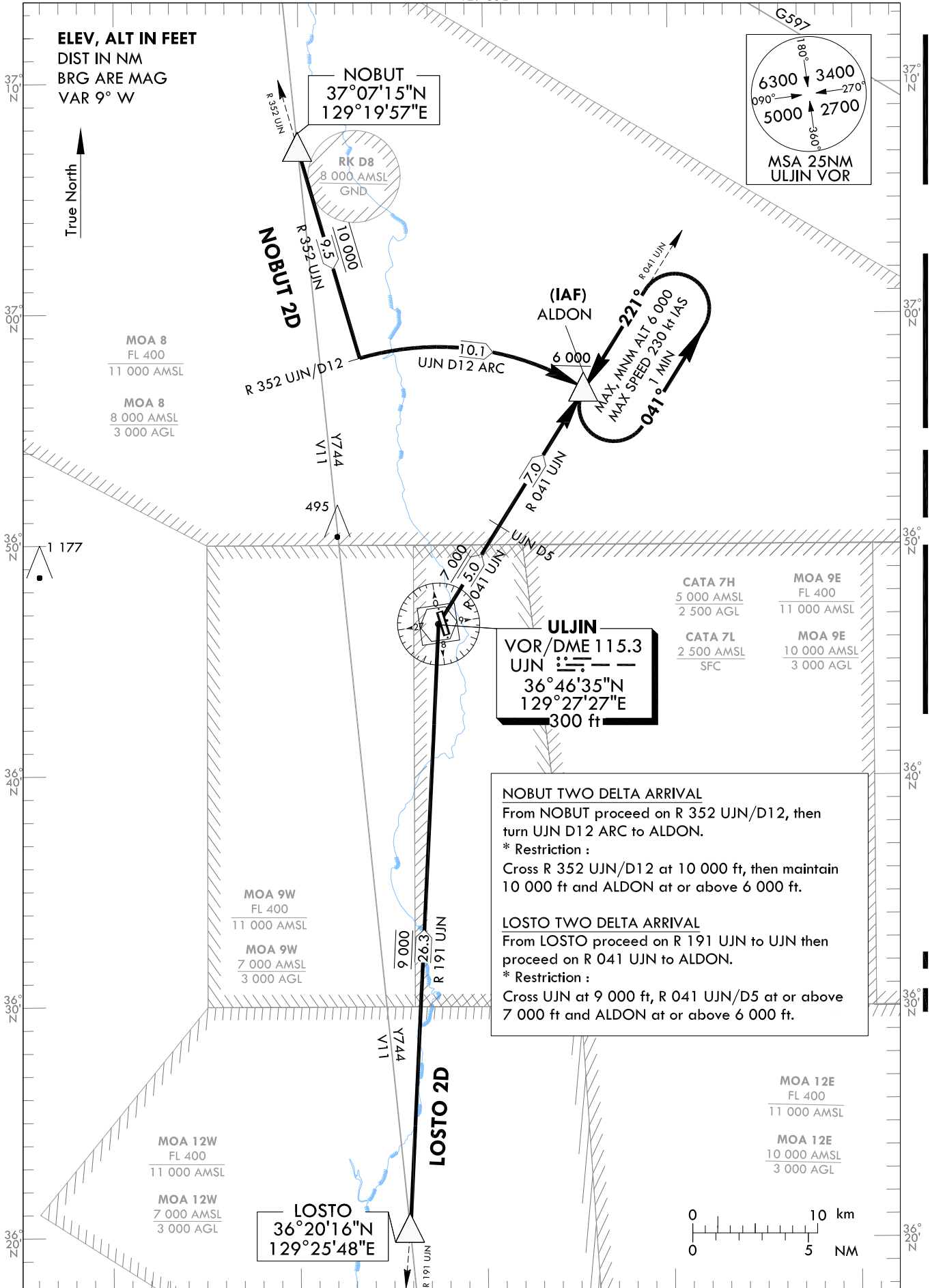
STANDARD ARRIVAL CHART
INSTRUMENT(STAR) - ICAO

TRANSITION ALT 14 000
TRANSITION LVL FL 140

ULJIN	ARR	120.875
		317.65
ULJIN	TWR	118.55
		317.45

ULJIN/ULjin(RKTL)
RWY 17
NOBUT 2D
LOSTO 2D

Note : Arrival under ICAO flight Procedures.



NOBUT TWO DELTA ARRIVAL
From NOBUT proceed on R 352 UJN/D12, then turn UJN D12 ARC to ALDON.
* Restriction :
Cross R 352 UJN/D12 at 10 000 ft, then maintain 10 000 ft and ALDON at or above 6 000 ft.

LOSTO TWO DELTA ARRIVAL
From LOSTO proceed on R 191 UJN to UJN then proceed on R 041 UJN to ALDON.
* Restriction :
Cross UJN at 9 000 ft, R 041 UJN/D5 at or above 7 000 ft and ALDON at or above 6 000 ft.

Change : Information of MAG VAR(8° W → 9° W), MSA, UJN VOR/DME and standard instrument arrival procedure for RWY 17.

INTENTIONALLY

LEFT

BLANK

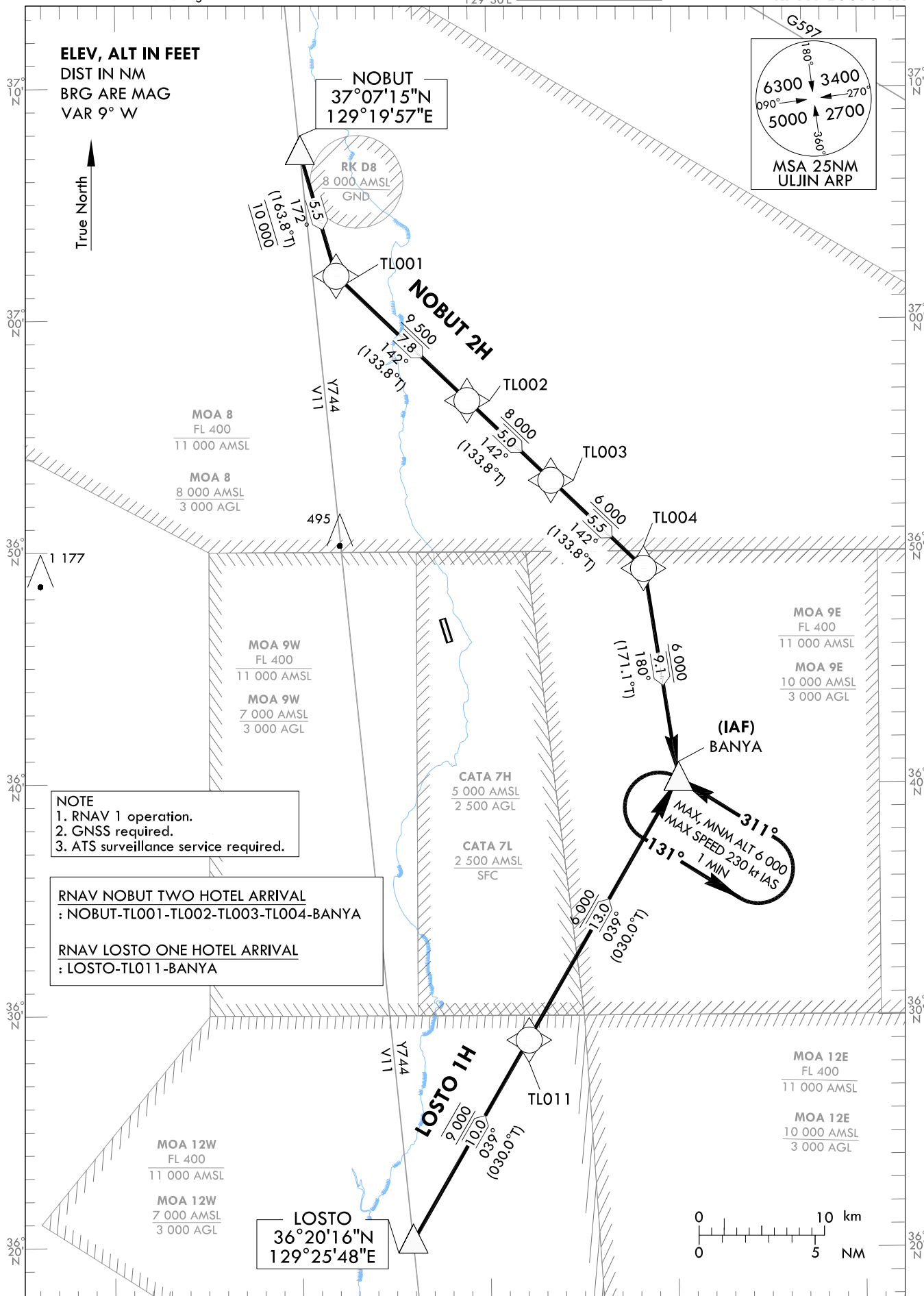
STANDARD ARRIVAL CHART
INSTRUMENT(STAR) - ICAO

TRANSITION ALT 14 000
TRANSITION LVL FL 140

ULJIN	ARR	120.875
ULJIN	TWR	317.65
		118.55
		317.45

ULJIN/ULjin(RKTL)
RWY 35
RNAV NOBUT 2H
RNAV LOSTO 1H

Note : Arrival under ICAO flight Procedures.



AERONAUTICAL DATA TABULATION

Standard Instrument Arrival Procedure Coding Tables

RNAV NOBUT 2H

Serial Number	Path Descriptor	Waypoint Identifier	Fly-over	Course/Track °M(°T)	Distance (NM)	Turn direction	Altitude (ft)	Speed (kt)	Coordinates	VPA/TCH	Navigation specification	Remarks
001	IF	NOBUT	-	-	-	-	-	-	37°07'15.1"N 129°19'56.6"E	-	RNAV 1	-
002	TF	TL001	-	172(163.8)	5.5	-	@10 000	-	37°01'57.9"N 129°21'52.1"E	-	RNAV 1	-
003	TF	TL002	-	142(133.8)	7.8	-	+9 500	-	36°56'33.3"N 129°28'54.3"E	-	RNAV 1	-
004	TF	TL003	-	142(133.8)	5.0	-	+8 000	-	36°53'05.2"N 129°33'24.1"E	-	RNAV 1	-
005	TF	TL004	-	142(133.8)	5.5	-	+6 000	-	36°49'15.2"N 129°38'21.7"E	-	RNAV 1	-
006	TF	BANYA	-	180(171.1)	9.1	-	+6 000	-	36°40'12.4"N 129°40'05.8"E	-	RNAV 1	IAF

RNAV LOSTO 1H

Serial Number	Path Descriptor	Waypoint Identifier	Fly-over	Course/Track °M(°T)	Distance (NM)	Turn direction	Altitude (ft)	Speed (kt)	Coordinates	VPA/TCH	Navigation specification	Remarks
001	IF	LOSTO	-	-	-	-	-	-	36°20'15.8"N 129°25'48.3"E	-	RNAV 1	-
002	TF	TL011	-	039(030.0)	10.0	-	@9 000	-	36°28'56.0"N 129°32'00.2"E	-	RNAV 1	-
003	HM	BANYA	-	039(030.0)	13.0	-	+6 000	-	36°40'12.4"N 129°40'05.8"E	-	RNAV 1	IAF

HOLDING PROCEDURE

Holding Identification	Path Descriptor	Waypoint Identifier	Fly-over	Course/Track °M(°T)	Time (min)	Turn direction	Altitude (ft)	Speed (kt)	Coordinates	VPA/TCH	Navigation specification	Remarks
RNAV NOBUT 2H RNAV LOSTO 1H	HM	BANYA	Y	131(122.0)	1.0	L	@6 000	-230	36°40'12.4"N 129°40'05.8"E	-	RNAV 1	-

Change : Amended altitude restriction for TL002(9 000 → 9 500).

STANDARD ARRIVAL CHART
INSTRUMENT(STAR) - ICAO

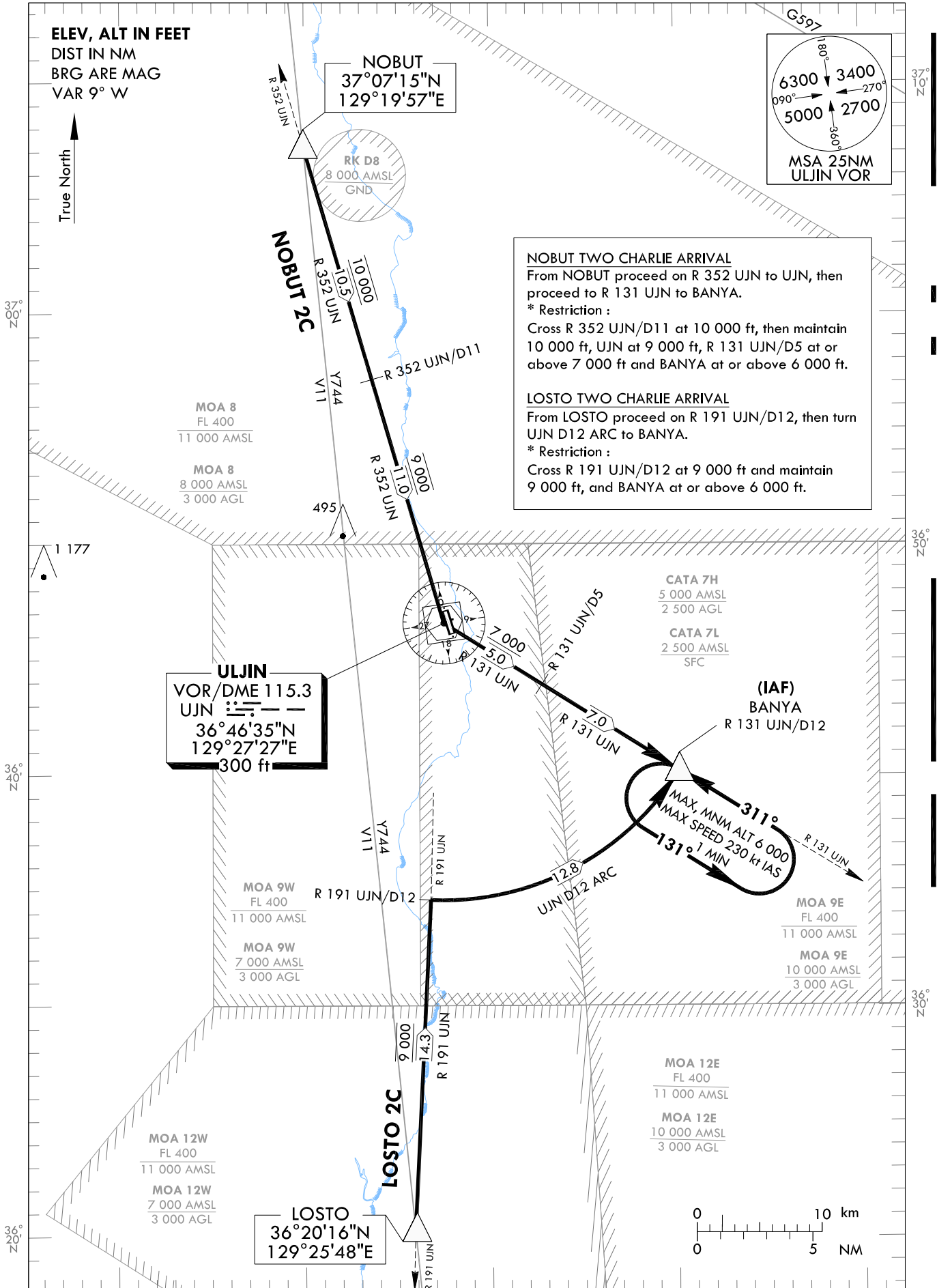
TRANSITION ALT 14 000
TRANSITION LVL FL 140

ULJIN	ARR	120.875
		317.65
ULJIN	TWR	118.55
		317.45

ULJIN/ULjin(RKTL)
RWY 35
NOBUT 2C
LOSTO 2C

Note : Arrival under ICAO flight Procedures.

129°30'E



Change : Information of MAG VAR(8° W → 9° W), MSA, UJN VOR/DME and standard instrument arrival procedure for RWY 35.

INTENTIONALLY

LEFT

BLANK